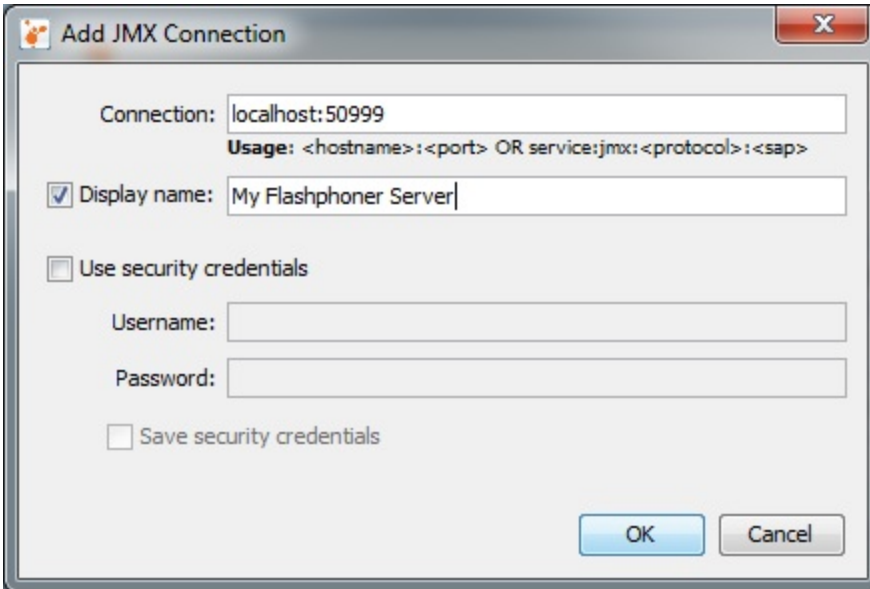


# Подключение из Visual VM

VisualVM - это другой более удобный клиент для мониторинга сервера.

1. Скачайте и установите VisualVM с сайта <http://visualvm.java.net>.
2. Запустите VisualVM и выберите File > Add JMX Connection и введите хост и порт WCS сервера для JMX соединения.



3. Откройте меню 'Applications'. Вы увидите ранее созданное JMX-соединение 'My Flashphoner Server'.



4. Кликните по 'My Flashphoner Server' чтобы открыть окно мониторинга.

VisualVM 1.3.5

File Applications View Tools Window Help

48,6/87,0MB

Start Page My Flashphoner Server

Overview Monitor Threads Sampler Memory Pools Visual GC

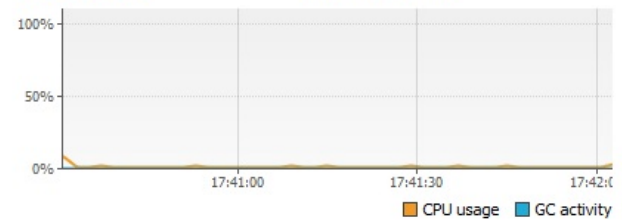
### My Flashphoner Server

Monitor  CPU  Memory  Classes  Threads

Uptime: 6 hrs 55 min 18 sec Perform GC Heap Dump

CPU  GC activity: 0,0%

CPU usage: 3,7%



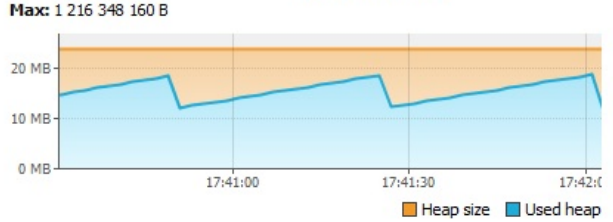
100%  
50%  
0%

17:41:00 17:41:30 17:42:00

CPU usage GC activity

Heap PermGen

Size: 25 055 232 B Used: 13 237 984 B  
Max: 1 216 348 160 B



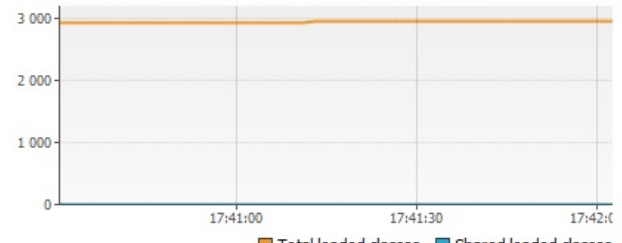
20 MB  
10 MB  
0 MB

17:41:00 17:41:30 17:42:00

Heap size Used heap

Classes

Total loaded: 2 971 Shared loaded: 0  
Total unloaded: 7 Shared unloaded: 0



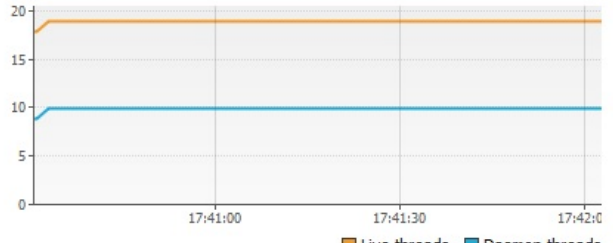
3 000  
2 000  
1 000  
0

17:41:00 17:41:30 17:42:00

Total loaded classes Shared loaded classes

Threads

Live: 19 Live peak: 43  
Daemon: 10 Total started: 151



20  
15  
10  
5  
0

17:41:00 17:41:30 17:42:00

Live threads Daemon threads