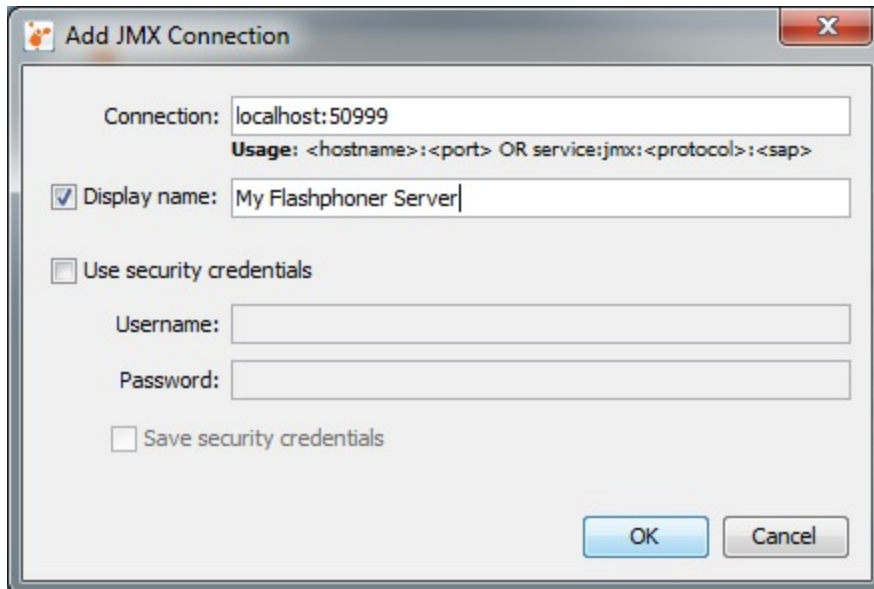


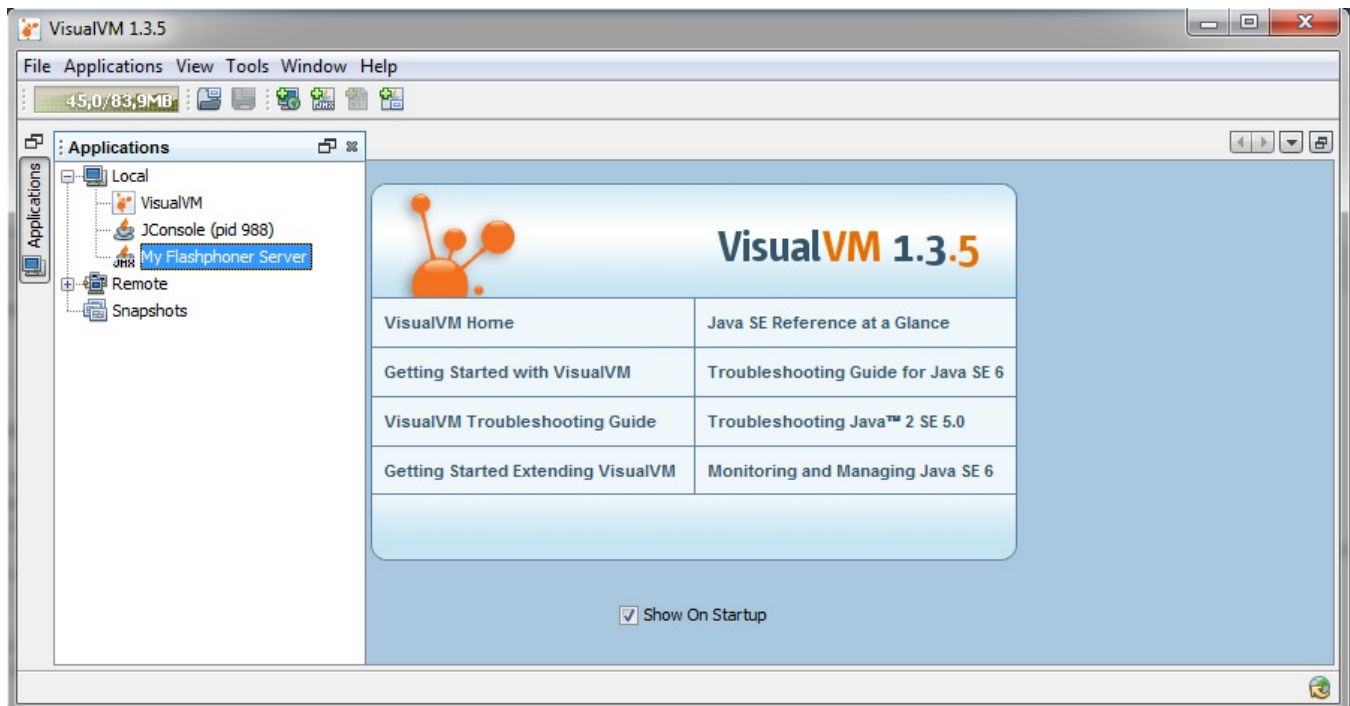
# Connecting from Visual VM

VisualVM is another, more convenient client to monitor the server.

1. Download and install VisualVM from <http://visualvm.java.net>.
2. Start VisualVM and select File > Add JMX Connection, then enter the host and the port of the WCS server for JMX connection.



3. Open the 'Applications' menu. You should see the previously created JMX connection 'My Flashphoner Server'.



4. Click 'My Flashphoner Server' to open the monitoring window.

