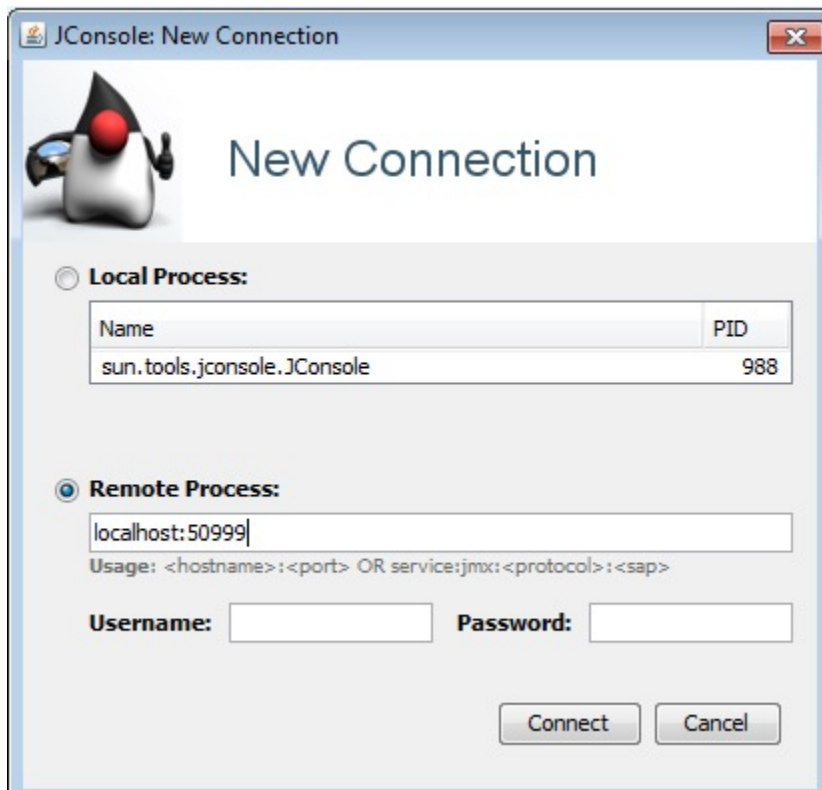


# Connecting from JConsole

JConsole is a client application shipped along with JDK. JConsole is launched on the user's (administrator) computer. You can find full description of JConsole operation at [oracle.com](http://oracle.com).

1. Open JConsole and connect to the server. Replace 'localhost' with your server or use an SSH tunnel to work via 'localhost'.



2. Here is how monitoring overview looks like: Memory, Threads, Classes, CPU.

