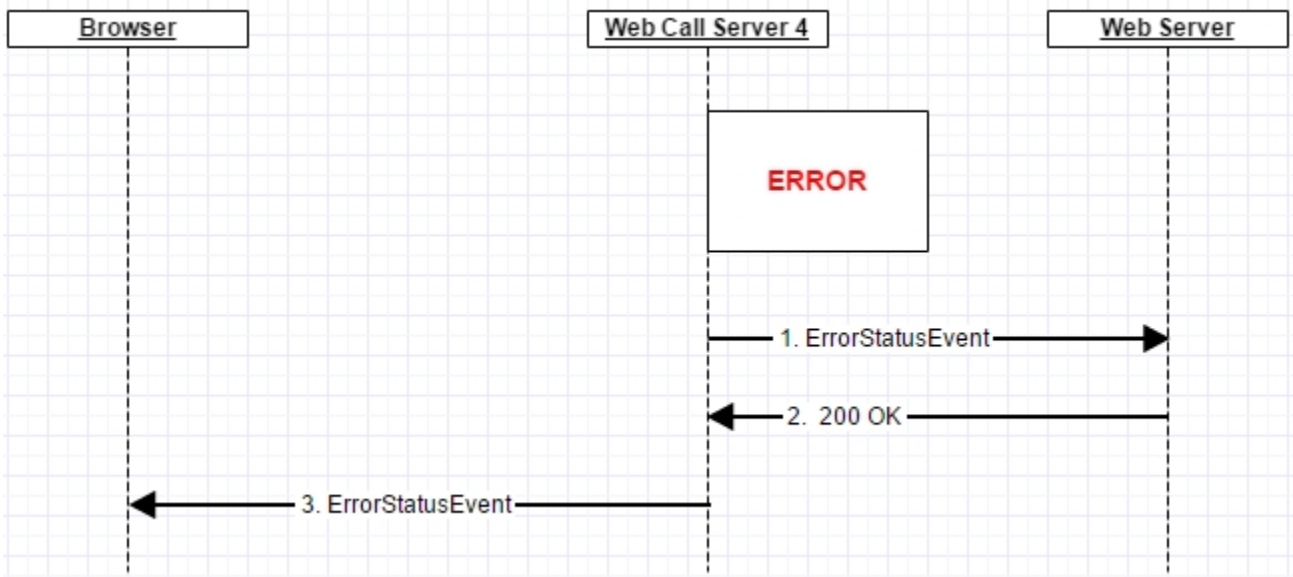


# Error handling

When error occurs, this error is delivered in appropriate event. For example, when connection error occurs, `ConnectionStatusEvent` is the event for this error. In case of error with SIP calls, `CallStatusEvent` contains `status=FAILED` and error description in 'info' field. If the error cannot be classified, it will be delivered to the client as Error Event with error description in 'info' field.



Also `ErrorEvent` will be delivered to the client in case of web server interaction errors when method '`event`' is called.

