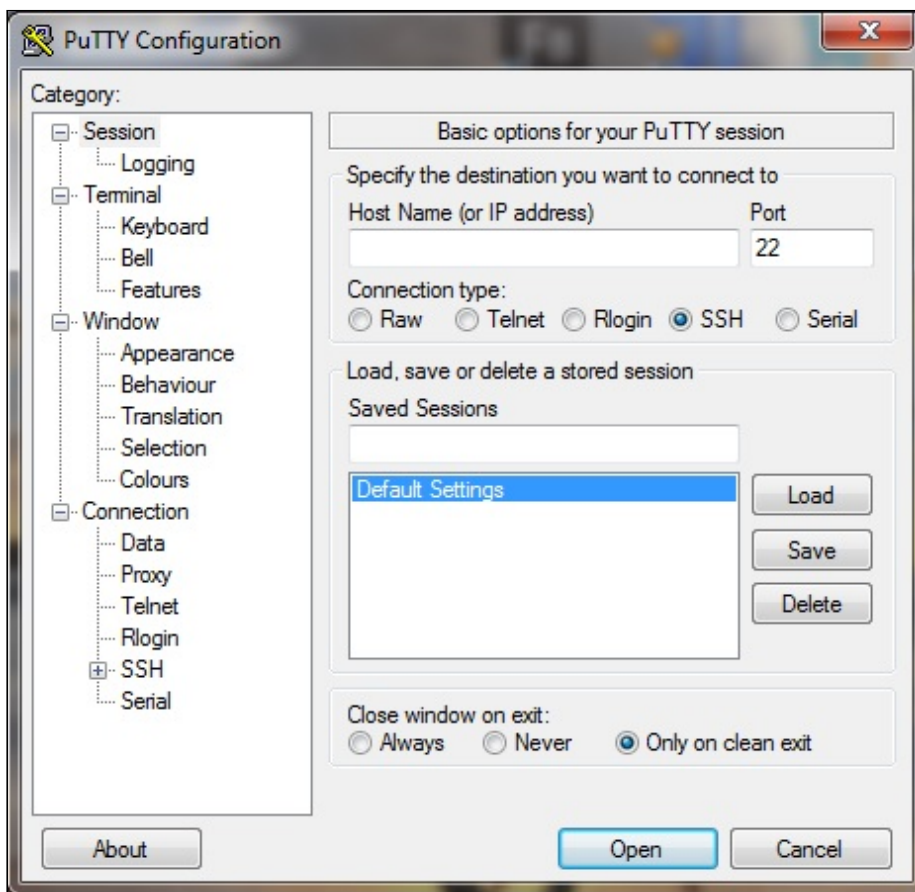


Using SSH tunnel

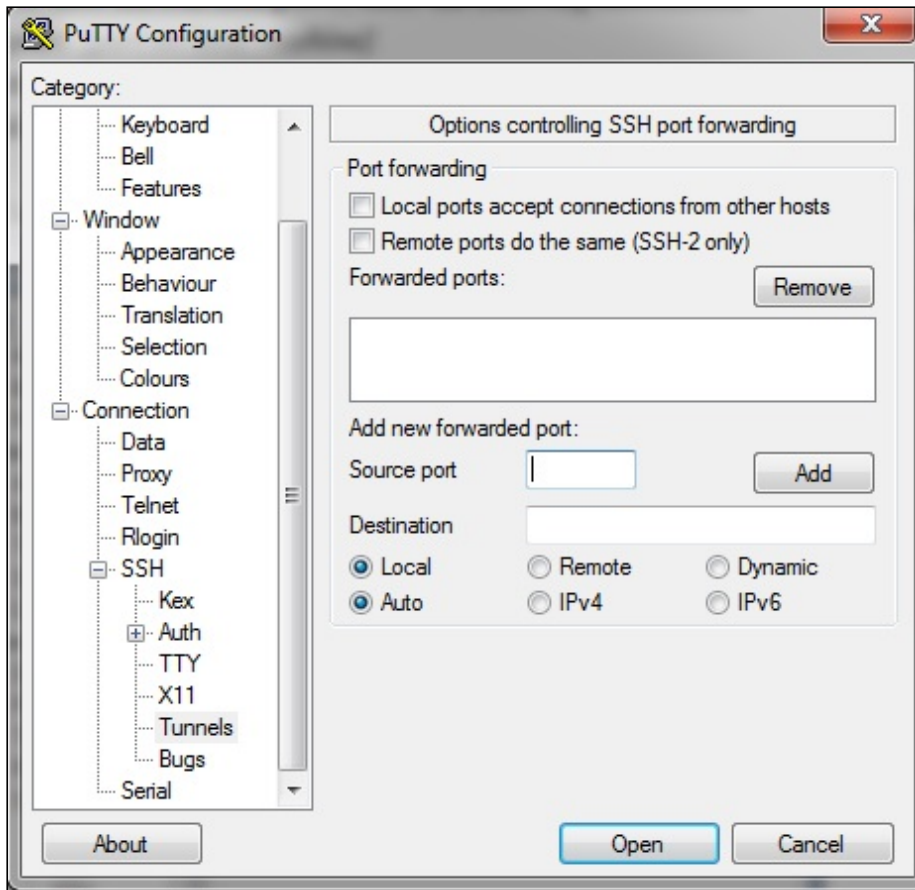
An SSH tunnel is convenient for establishing a secure connection of monitoring tools to the Linux server. You can create a tunnel using such SSH clients as Putty.

After you log in to the terminal of your Linux server using your login and password, your tunnel will redirect requests to localhost to this Linux server for the given ports. Below is configuration of an SSH-tunnel in Putty.

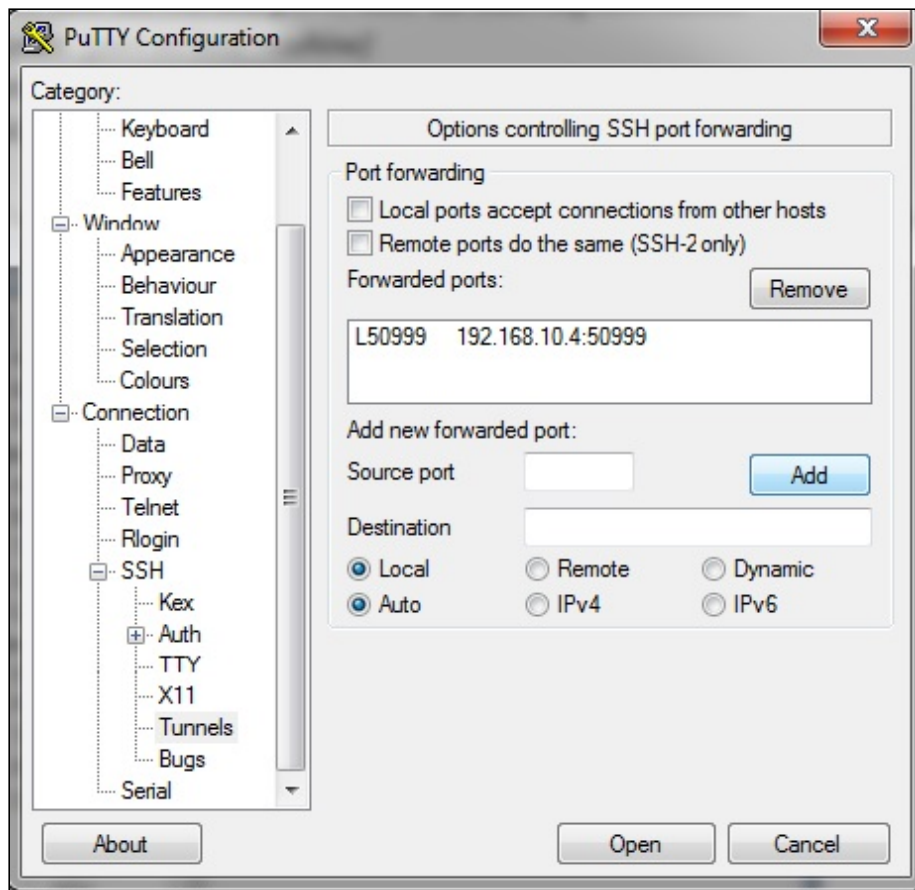
1. Open Putty.



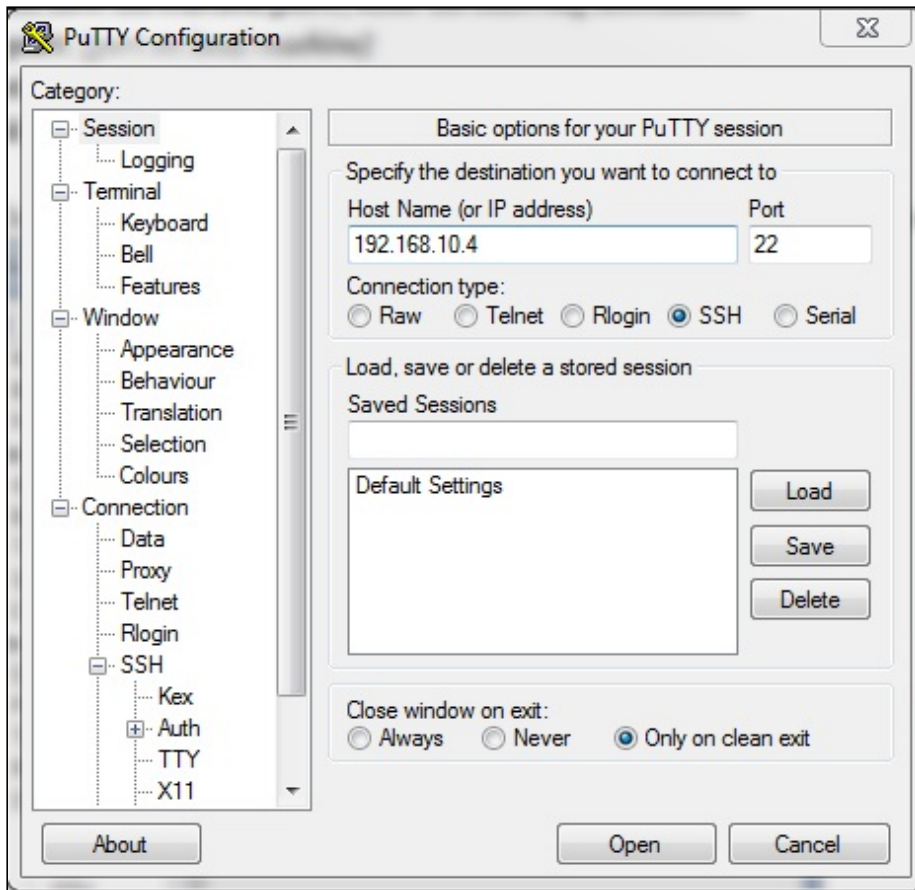
2. Open SSH > Tunnels.



3. Add a tunnel for port 59999.



4. Log in to the server.



That's it. Now all requests to localhost:50999 are redirected to 192.168.10.4 in a secure connection via the created SSH tunnel.